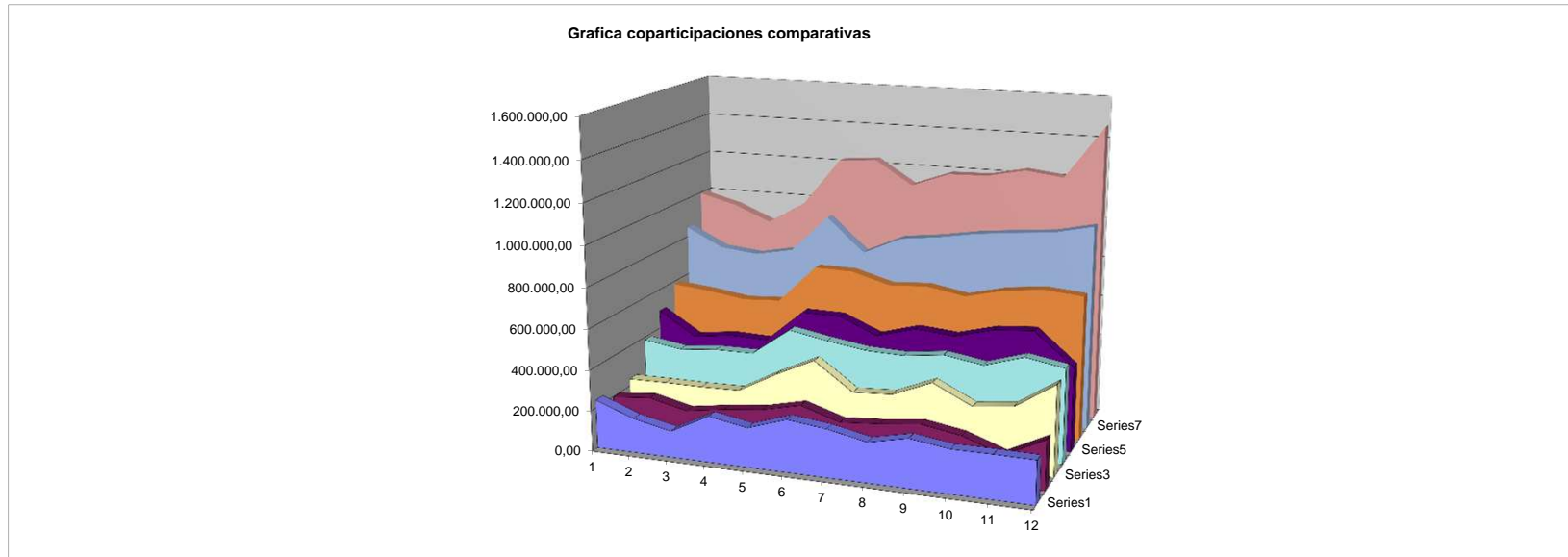


Resumen de Coparticipaciones Nacionales (Ley 8492 y modif.) comparativa

mes	2000	2001	2002	2003	2004	2005	2006	2007	2008	2009	2010	2011	2012	2013	2014	2015	
ene	43.678,42	54.508,73	30.850,32	48.388,53	54.599,37	81.580,62	130.718,77	178.816,50	238.073,30	197.247,91	235.687,01	386.269,03	489.987,88	585.966,72	847.750,97	994.314,82	17,29%
feb	47.114,22	41.783,26	29.883,82	45.169,11	80.740,68	104.023,54	117.249,42	134.358,14	169.089,20	214.963,81	237.991,78	357.312,34	374.778,44	568.272,10	756.633,49	946.934,47	25,15%
mar	45.322,16	46.238,54	42.014,83	38.444,50	66.677,56	69.386,77	92.159,35	134.012,95	129.340,85	172.348,18	237.682,76	375.134,31	400.047,48	540.975,78	737.837,38	870.403,43	17,97%
abr	53.175,57	50.057,71	28.023,80	44.010,50	59.806,88	103.215,51	116.510,87	147.306,40	226.025,10	202.064,87	241.635,84	376.283,56	393.901,96	552.178,84	774.935,72	981.317,87	26,63%
may	43.044,15	54.117,64	38.516,35	58.048,20	133.258,09	120.272,18	143.979,67	195.024,02	192.651,30	223.287,67	343.078,81	513.623,72	555.688,45	739.923,96	959.215,30	1.218.735,08	27,06%
jun	49.300,58	45.364,82	46.873,71	68.032,07	117.257,32	130.740,23	152.605,90	186.666,51	255.857,59	267.419,81	432.963,24	479.866,16	553.523,02	736.834,06	793.272,95	1.235.415,16	55,74%
jul	44.895,52	42.141,77	36.730,18	57.763,86	81.213,44	106.290,20	143.068,66	177.635,62	234.474,14	207.919,10	298.415,27	451.614,35	475.054,69	684.822,95	879.948,52	1.117.993,27	27,05%
ago	50.200,28	48.859,03	25.130,20	52.392,26	94.509,14	112.069,74	131.186,30	172.869,08	195.962,33	222.891,06	309.455,29	445.968,97	528.620,10	696.059,96	902.952,39	1.187.684,67	31,53%
sep	44.836,24	42.756,03	36.327,48	66.005,04	82.496,99	101.118,63	128.604,06	184.237,47	238.028,10	245.200,42	388.455,04	469.883,50	512.751,71	662.968,63	935.661,53	1.191.734,54	27,37%
oct	48.463,52	35.995,18	49.341,48	53.318,54	87.313,21	114.458,06	137.100,13	180.563,04	211.601,77	214.225,84	295.506,91	440.034,54	562.776,10	710.239,30	955.982,32	1.230.937,02	28,76%
nov	47.435,90	27.095,63	42.139,02	70.632,45	91.913,08	115.155,45	142.539,85	167.017,54	212.440,92	146.787,71	318.051,48	499.621,02	577.124,58	731.385,52	973.568,09	1.209.121,94	24,19%
dic	46.870,84	33.095,60	44.737,61	81.861,20	81.548,09	102.536,72	129.711,41	198.285,20	210.082,58	242.725,24	444.926,65	466.580,67	417.521,81	715.519,36	1.016.357,25	1.468.533,11	44,49%
	<b>564.337,40</b>	<b>522.013,94</b>	<b>450.568,80</b>	<b>684.066,26</b>	<b>1.031.333,85</b>	<b>1.260.847,65</b>	<b>1.565.434,39</b>	<b>2.056.792,47</b>	<b>2.513.627,18</b>	<b>2.557.081,62</b>	<b>3.783.850,08</b>	<b>5.262.192,17</b>	<b>5.841.776,22</b>	<b>7.925.147,18</b>	<b>10.534.115,91</b>	<b>13.653.125,38</b>	<b>29,44%</b>
	1	0,93	0,86	1,52	1,51	1,22	1,24	1,31	1,22	1,02	1,48	1,39	1,11				



Fuente: Contaduría General de Entre Ríos

Preparado por Cr. Julio C FOCESATTO - Asesor Contable - Municipalidad de San Jaime